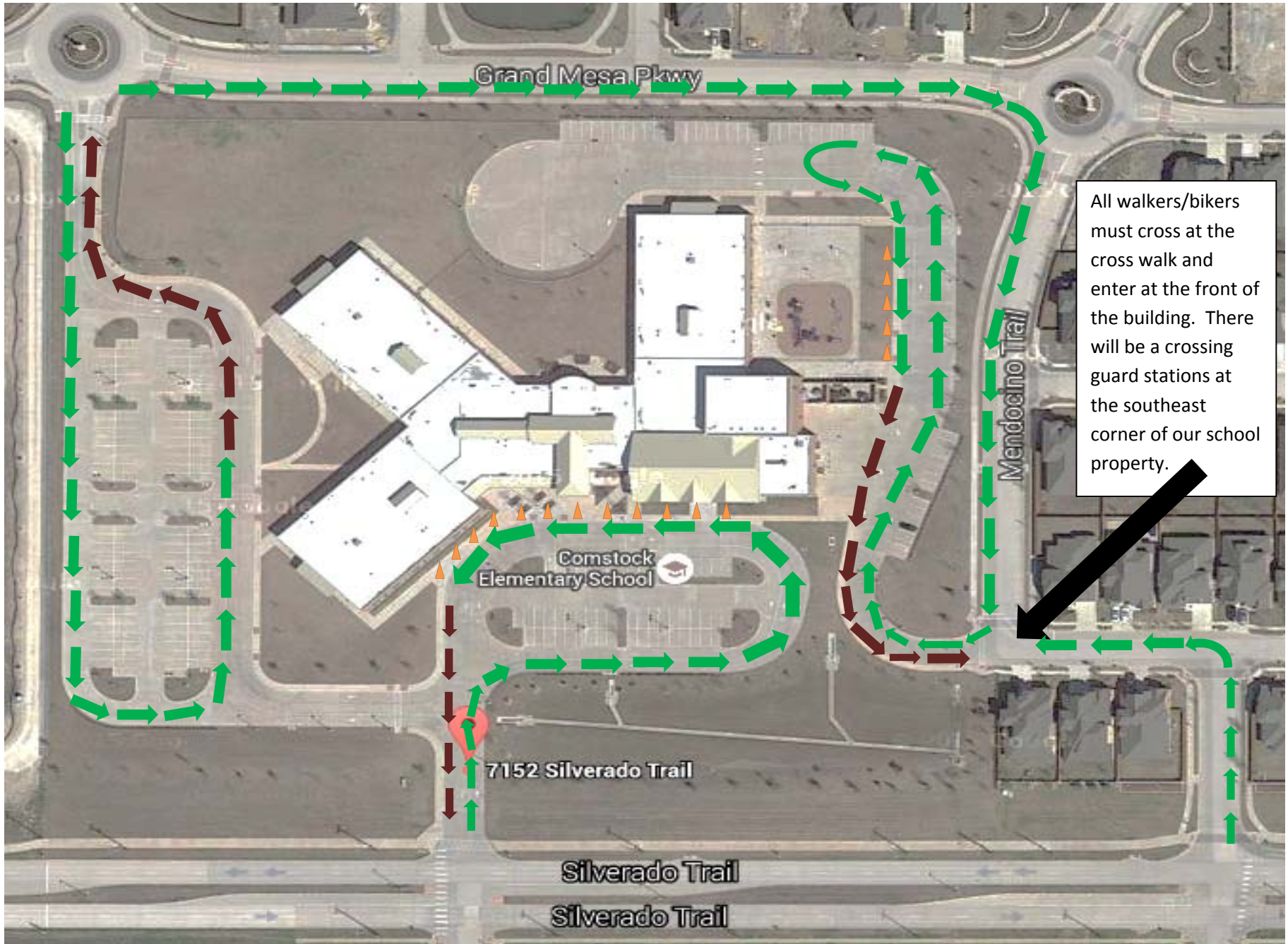


Comstock Elementary 2018/19 Arrival Route

Safety Patrol ▲



Comstock Elementary 2018/19 Arrival Route Procedures

General Arrival Procedures:

- At 7:20, students will report directly to their classrooms.
- Students are considered tardy if they are not through the security doors by 7:45.

Rainy Day Arrival:

- Please follow the same procedures as you would for regular morning arrival.
- In the event that a change is necessary, you will be instructed by Comstock staff on how to proceed.

Comstock Morning Car Line Drop Off Options:

- To expedite morning drop off, we will have THREE drop off locations.
- Option 1: Students will be dropped off at the front driveway and will enter through the front of the building.
- Option 2: Students will be dropped off at the east driveway and enter through the gym entrance beside the playground.
- Option 3: Students will be dropped off at the west driveway and enter through the POD 3 doors.
- Walkers will enter at the front of the school. Walkers/riders arriving from the east must use the cross-walk guard at the southeast corner onto our sidewalk.
- Comstock staff and student safety patrol will be on duty to ensure students exit the car safely. As you arrive at the curb pull up to farthest available cone and come to a complete stop. Please have students ready to exit immediately after stopping. This means backpacks ready, shoes on, hugs and kisses done... and a quick "I love you" and they are on their way.

Comstock Morning Bus/Daycare Arrival:

- Buses/Daycare will utilize the front circle drive for morning student drop off.
- Students will enter through the front doors of the building.

Comstock Walker/Biker Arrival:

- Students who walk to school should enter through the front doors of the building.
- Once on Comstock property, bike/scooter riders should walk their bike/scooter.

Comstock Elementary 2018/19 Dismissal Route



Comstock Elementary 2018/19 Dismissal Procedures

General information:

- Students will be dismissed with staff supervision at 2:55 PM.
- Students will be dismissed by groups (carpool, walker/bike rider, bus/daycare...)

Carpool

- Please do not get out of your vehicle while in the carpool line.
- K-1 students and their siblings will connect at their designated dismissal spot.
- 2-5 students will be escorted to the northwest lawn for dismissal.

K – 1 Carpool Lane

- **The K-1 carpool line will begin in the east side drive of the school that is accessible from Silverado> Blue Moon> left on Denali (see map attached)**
- Students in this carpool line will be dismissed from the outside or the gym.
- Cars will form a single file line.
- Teachers will be on duty at specific pick up stations curbside by the gym.
- Students will be dismissed from the gym to a designated color cone.
- Parents will pull up to the cone and students will be loaded into your car.
- Please remain in your car and do not wave students over to your car.
- Please stay in order in the line. We are calling students to the cones in a specific order.
- Once you have your children in the car, please proceed to the driveway exit.

2 – 5 Carpool Lane

- **The 2-5 carpool line will be located on the west side of the school. Enter the line at the main entrance of Comstock or the northwest entrance off of Grand Mesa and follow the directive arrows through the parking lot (see map attached).**
- Students in this carpool line will be dismissed from the northwest lawn.
- Cars will form a double lane line.
- Teachers will be on duty at specific pick up stations along the curb.
- Students will be dismissed to a specific cone.
- Parents will pull up to the cone and students will be loaded in your car.
- Please remain in your car and do not wave students over to your car.
- Once you have your children in the car, please proceed to the driveway exit.

Rainy Day Carpool Dismissal:

- Stay in your car and follow the daily dismissal plan as teachers bring students to cars with umbrellas- please do not get out of your car.
- In the event of severe inclement weather, dismissal may be delayed until it is safe to send students outside.

Walkers/Bike riders:

- K-1 walkers and bike riders will be dismissed from the front doors of the school building at 2:55
- 2-5 walkers and bike riders will be dismissed from the west front doors of the school at 2:55

Alphabest/YMCA students:

- Students who attend an on campus after school daycare will be escorted by Comstock staff to their specific program. Alphabest will be held in the cafeteria, the YMCA will meet in the gym.
- **It is the parent's responsibility to contact these programs for any changes in transportation or concerns.**

Bus/Daycare Van Riders:

- Students who ride an FSD bus or a daycare van will gather in the cafeteria. Comstock staff will monitor the students until the bus/van arrives.
- Buses and vans will arrive at the front of the school to pick up students.

Dismissal Changes:

- In the event of a dismissal change, please email your child's teacher. It is best to email prior to noon.